



# THE MOST BEAUTIFUL VIEWS OF PARIS

Recommended for Key stage 2 &3 groups  
English only  
Teacher Sheet





### Question 1

Who ordered the construction Of the Arc de Triomphe?

Napoléon the 1<sup>st</sup>

### Question 2

In which numbered area of Paris would you find the Centre Georges Pompidou

4<sup>th</sup>

**Question 3** When did the French Revolution take place?

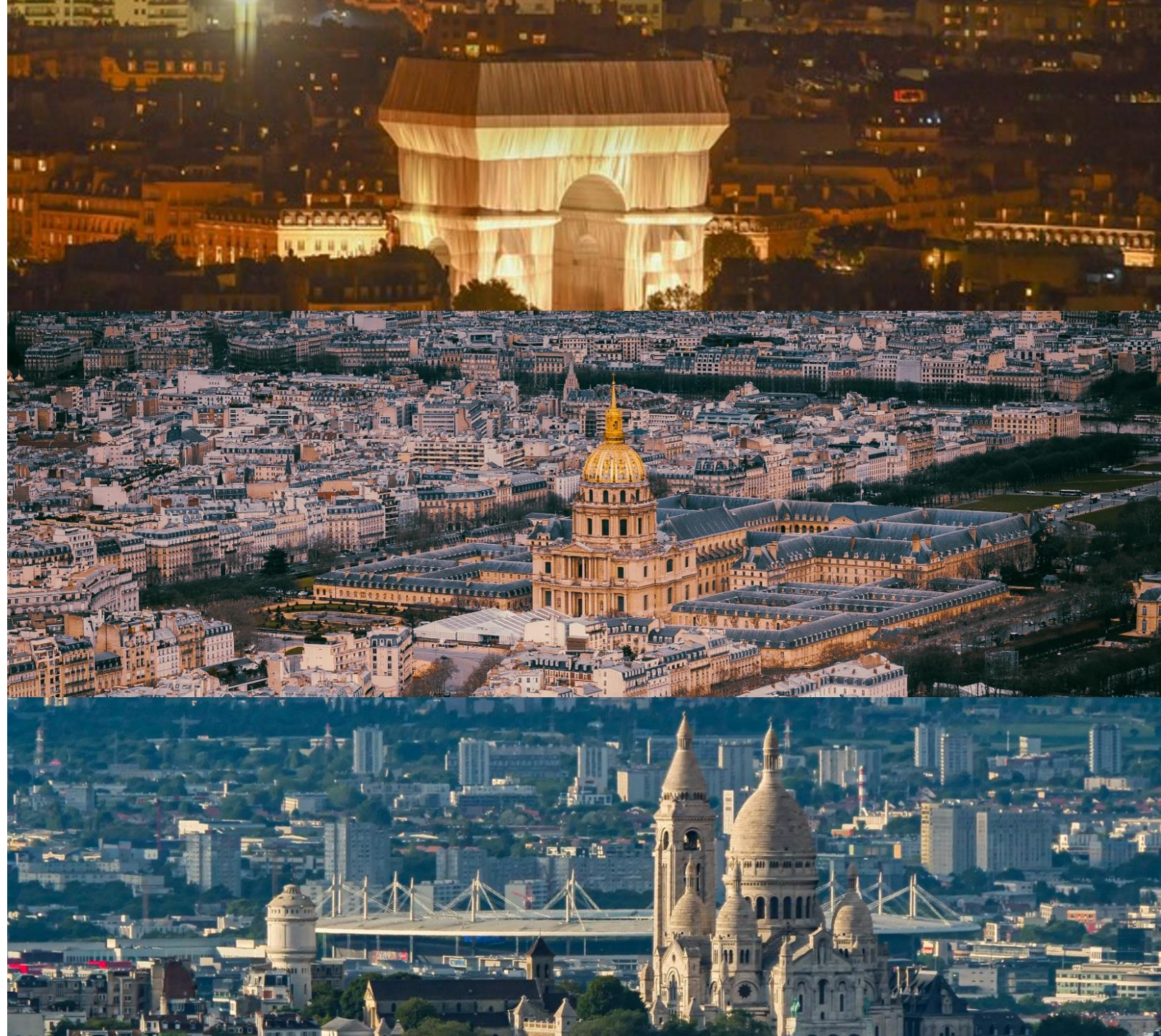
1789

**Question 4** True or False?

You can drive a car across the Pont des Arts. **False**

**Question 5** After Notre- Dame which is the most visited monument in Paris?

Sacré cœur (de Montmartre)





# MONTPARNASSE TOWER

## Question 1

If you take the fastest lift how long does it take to travel from the ground floor to the 56th floor?

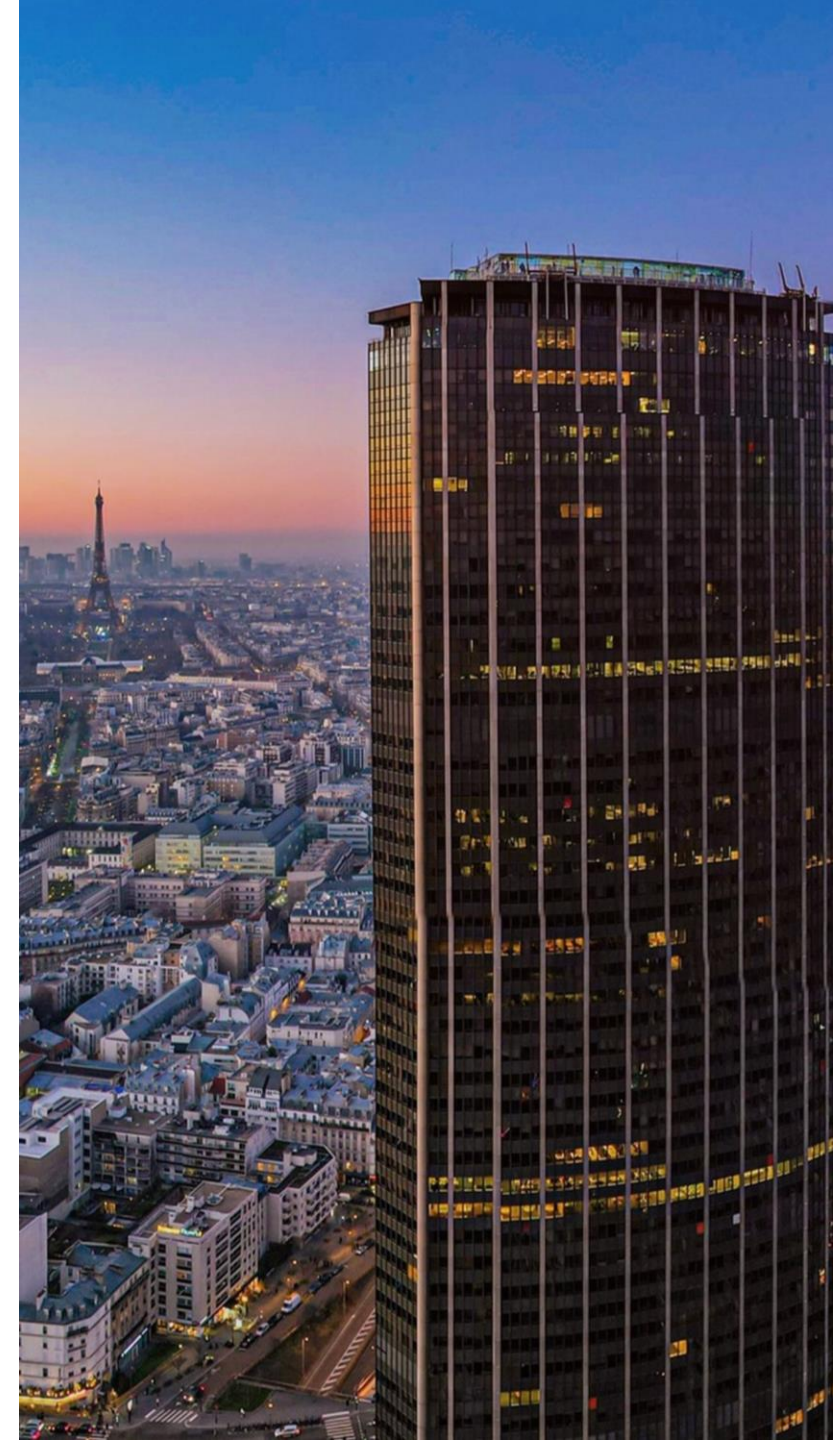
38 seconds

**Question 2** In which year did the building of the Montparnasse tower begin? 1970

**Question 3** True or False. The Montparnasse Tower is higher than the Part-Dieu Tower in Lyon. True

**Question 4** How tall is the Montparnasse tower? 210 meters / 689 feet.

**Question 5** What is the weight of the tower? 150 000 tonnes



# ICONIC PARISIAN MONUMENTS

- Question 1** In which museum would you find la Joconde? [The Louvre](#)
- Question 2** Which park was created by Napoleon III? [Parc des Buttes Chaumont](#)
- Question 3** What exactly is the Centre Pompidou? [A \(contemporary\) museum](#)
- Question 4** Name the oldest bridge in Paris. [Le Pont Neuf](#)
- Question 5** Which airport can be seen on the map? [Le Bourget](#)
- Question 6** Which gardens are opposite the Eiffel Tower? [The Trocadéro](#)
- Question 7** How is the Quai Branly Museum protected from noise pollution?  
[A glass wall](#)
- Question 8** Who is the most famous graduate from the Ecole Militaire? [Napoleon Bonaparte](#)
- Question 9** Which monument stands in the middle of La Défense business district?  
[La Grande Arche](#)
- Question 10** What is the name of the business district that can be seen? [La Défense](#)





# PARISIAN METRO

**Question 1** In which decade did it become legal to sell goods in the métro? [1970s](#)

**Question 2** In which year did the first woman drive a métro train? [1982](#)

**Question 3** Name a politician who has a métro station named after them. [Charles de Gaulle](#) Or [Franklin Roosevelt](#)

**Question 4** Name the ABBA song which mentions Paris. [Our last summer](#)

**Question 5** Which famous avenue/street did Joe Dassin sing about? [Champs-Elysées](#)



E	+	+	+	+	+	+	+	U	+	+	+	+	+	+
+	H	+	+	A	+	+	+	O	+	+	+	+	+	B
+	+	P	S	+	+	+	+	D	+	+	+	+	N	R
+	+	I	M	C	+	+	+	I	+	+	+	O	+	A
+	L	+	+	O	H	+	+	P	+	+	E	+	+	N
T	O	U	R	+	I	A	+	M	+	L	+	A	+	L
+	+	+	+	+	+	R	M	O	O	+	+	N	+	Y
E	L	Y	S	E	E	S	T	P	A	+	+	O	+	+
+	+	+	+	+	+	+	A	+	S	R	E	M	+	+
E	L	O	C	E	I	N	+	+	+	I	C	+	+	+
+	+	+	+	+	+	A	+	+	F	+	+	+	+	+
+	+	+	+	+	+	+	U	F	+	+	+	+	+	+
+	+	+	+	+	+	+	E	Q	+	+	+	+	+	+
E	R	I	A	T	I	L	I	M	+	+	+	+	+	+
+	+	+	+	+	+	+	+	+	+	+	+	+	+	+

(Over, Down, Direction)

ARC (10, 8, SE)

BRANLY (15,2,S)

CHAMPS (5,4,SE)

ECOLE (5,10,W)

EIFFEL (12,9,W)

ELYSEES (1,8,E)

LISA (2,5,NE)

MILITAIRE (9,14,W)

MONA (13,9,N)

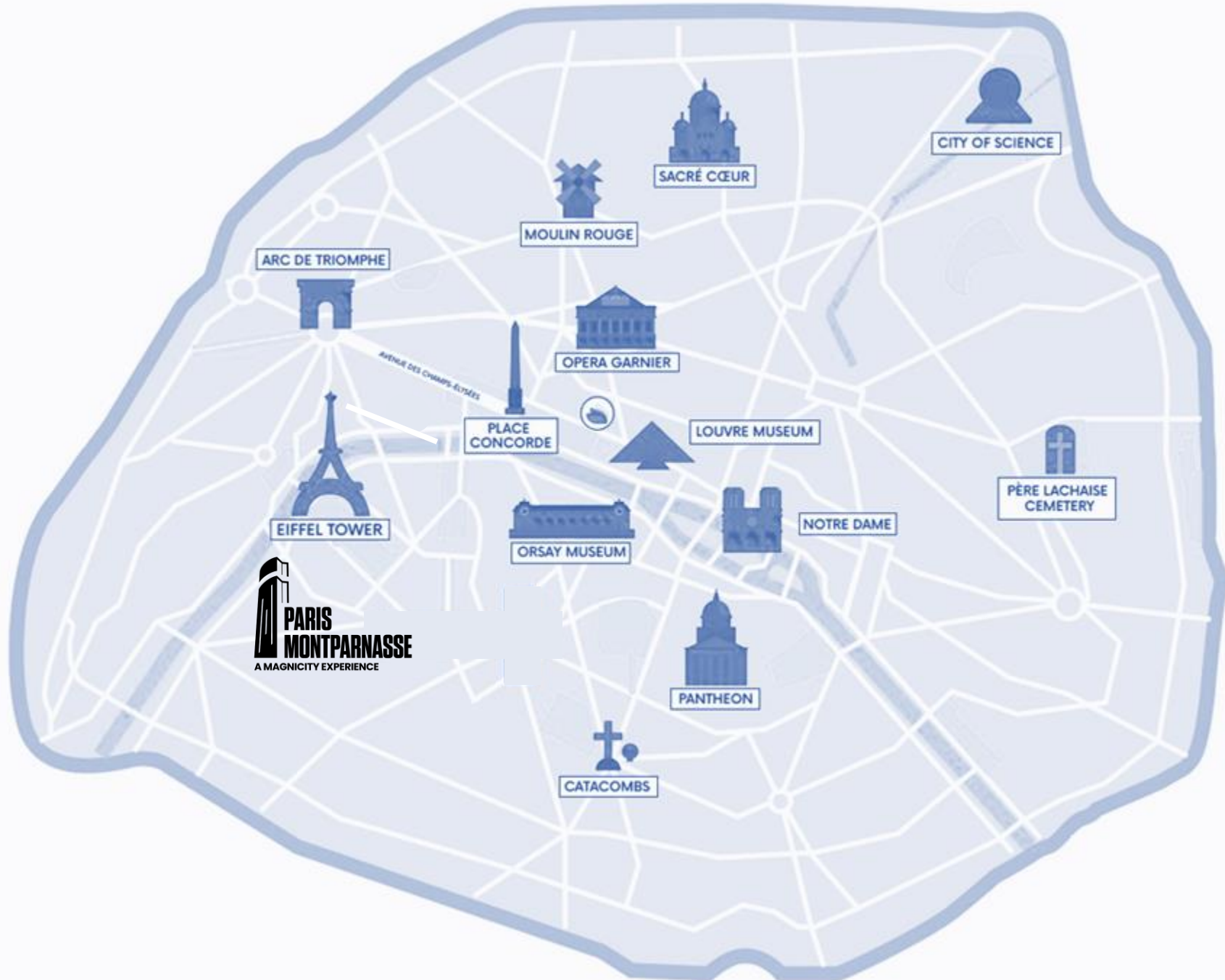
NAPOLEON (7,10,NE)

POMPIDOU (9,8,N)

QUAI (9,13,NW)

TOUR (1,6,E)

TRIOMPHE (8,8,NW)



 **PARIS  
MONTPARNASSE**  
A MAGNIFICITY EXPERIENCE



**TOUR MONTPARNASSE**

33 avenue du Maine, 75015 Paris

Metro lines 4, 6, 12, 13,  
Station: Montparnasse-Bienvenüe

[tourmontparnasse56.com](http://tourmontparnasse56.com)